


Chromatic & Major Scales

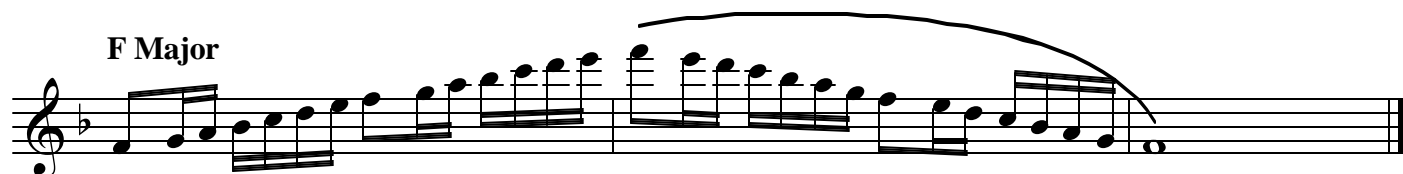
Mallet Percussion

C Major



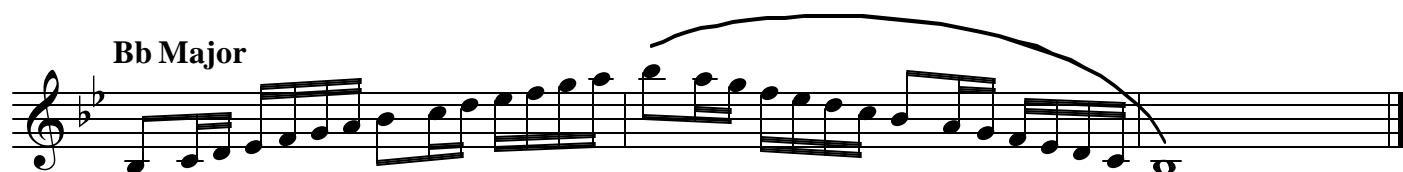
Musical notation for the C Major scale in treble clef, common time. The scale is written as a single line of music with a treble clef, a common time signature, and a key signature of one flat (Bb). The scale is written in a chromatic style, with ascending and descending lines. The ascending line starts on C4 and goes up to C5, and the descending line starts on C5 and goes down to C4. The scale is written in a single line of music with a treble clef, a common time signature, and a key signature of one flat (Bb). The scale is written in a chromatic style, with ascending and descending lines. The ascending line starts on C4 and goes up to C5, and the descending line starts on C5 and goes down to C4.

F Major




Musical notation for the F Major scale in treble clef, common time. The scale is written as a single line of music with a treble clef, a common time signature, and a key signature of two flats (Bb, Eb). The scale is written in a chromatic style, with ascending and descending lines. The ascending line starts on F4 and goes up to F5, and the descending line starts on F5 and goes down to F4.

Bb Major



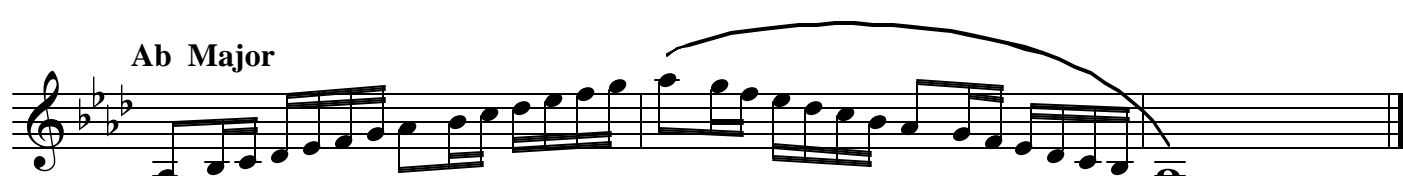
Musical notation for the Bb Major scale in treble clef, common time. The scale is written as a single line of music with a treble clef, a common time signature, and a key signature of two flats (Bb, Eb). The scale is written in a chromatic style, with ascending and descending lines. The ascending line starts on Bb4 and goes up to Bb5, and the descending line starts on Bb5 and goes down to Bb4.

Eb Major



Musical notation for the Eb Major scale in treble clef, common time. The scale is written as a single line of music with a treble clef, a common time signature, and a key signature of three flats (Bb, Eb, Ab). The scale is written in a chromatic style, with ascending and descending lines. The ascending line starts on Eb4 and goes up to Eb5, and the descending line starts on Eb5 and goes down to Eb4.

Ab Major



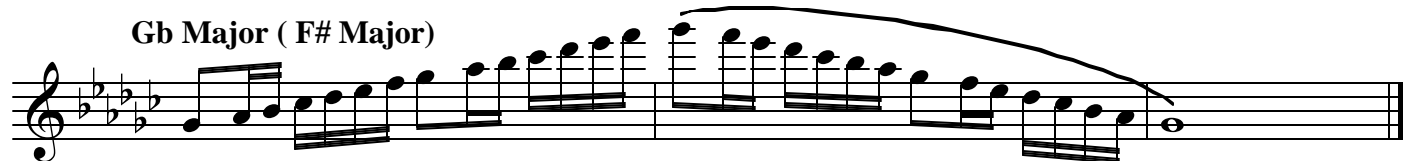
Musical notation for the Ab Major scale in treble clef, common time. The scale is written as a single line of music with a treble clef, a common time signature, and a key signature of three flats (Bb, Eb, Ab). The scale is written in a chromatic style, with ascending and descending lines. The ascending line starts on Ab4 and goes up to Ab5, and the descending line starts on Ab5 and goes down to Ab4.

Db Major



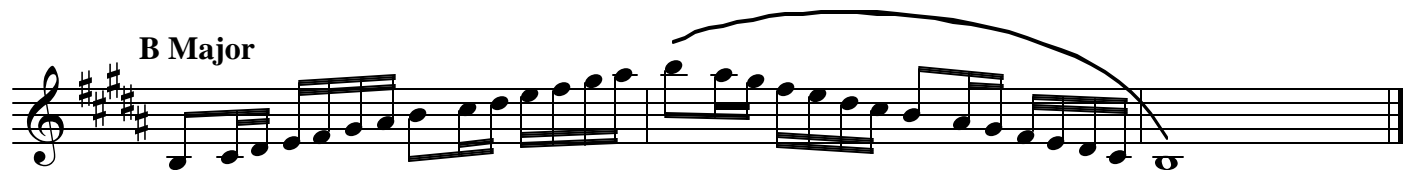
Musical notation for the Db Major scale in treble clef, common time. The scale is written as a single line of music with a treble clef, a common time signature, and a key signature of four flats (Bb, Eb, Ab, Db). The scale is written in a chromatic style, with ascending and descending lines. The ascending line starts on Db4 and goes up to Db5, and the descending line starts on Db5 and goes down to Db4.

Gb Major (F# Major)



Musical notation for the Gb Major (F# Major) scale in treble clef, common time. The scale is written as a single line of music with a treble clef, a common time signature, and a key signature of four flats (Bb, Eb, Ab, Db). The scale is written in a chromatic style, with ascending and descending lines. The ascending line starts on Gb4 and goes up to Gb5, and the descending line starts on Gb5 and goes down to Gb4.

B Major

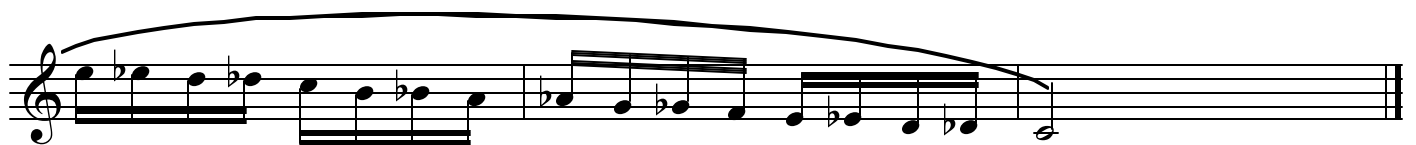
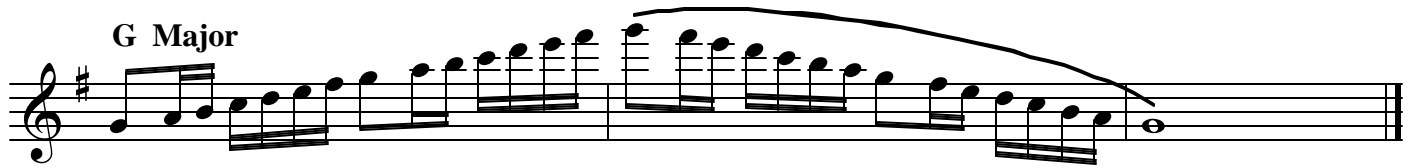
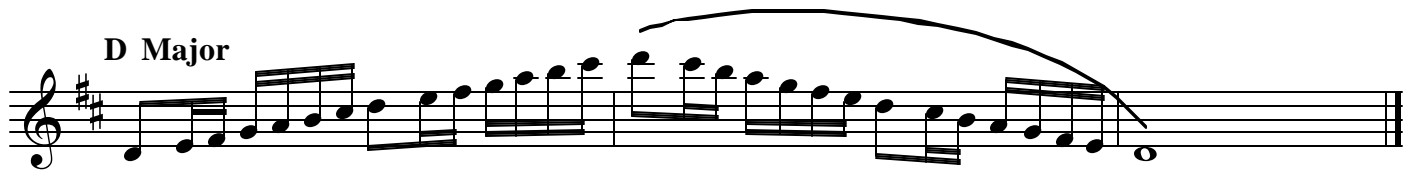
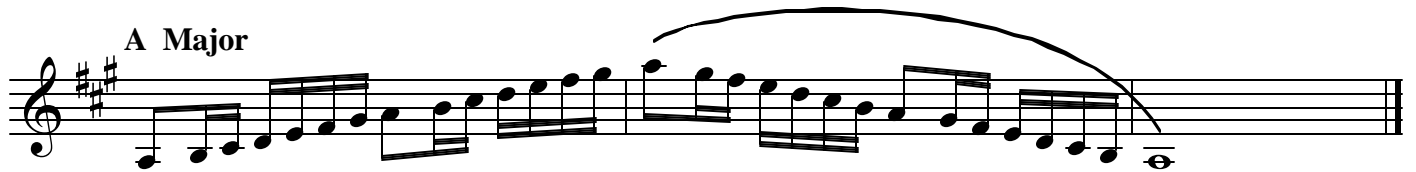
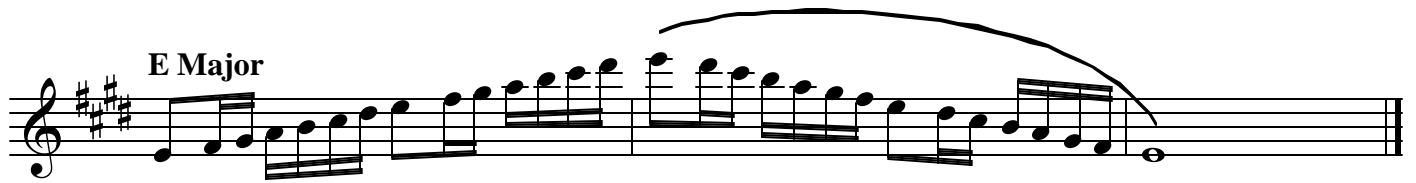


Musical notation for the B Major scale in treble clef, common time. The scale is written as a single line of music with a treble clef, a common time signature, and a key signature of two sharps (F#, C#). The scale is written in a chromatic style, with ascending and descending lines. The ascending line starts on B4 and goes up to B5, and the descending line starts on B5 and goes down to B4.

1. Quarter note = 72 (minimum) for all scales

2. All Scales shall be performed ascending - tongued; descending - slurred.

Chromatic & Major Scales Mallet Percussion



1. Quarter note = 72 (minimum) for all scales
2. All Scales shall be performed ascending - tongued; descending - slurred.