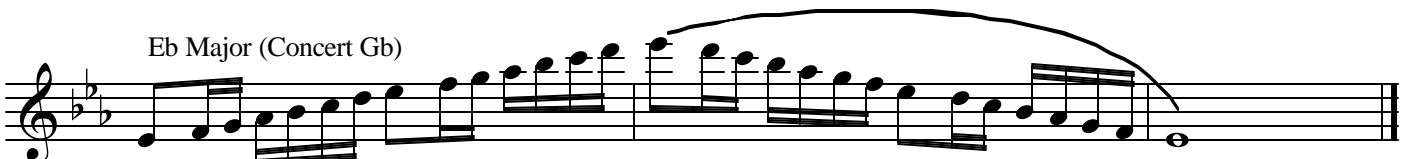
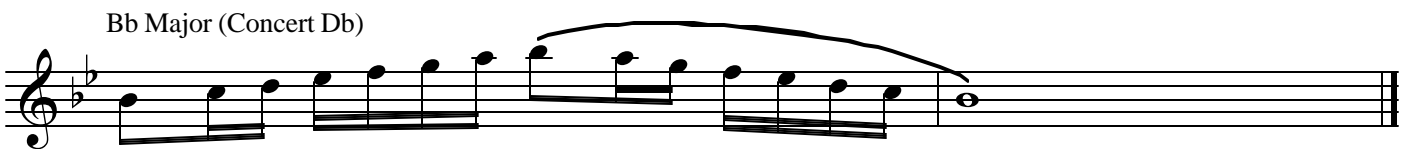


Chromatic & Major Scales

Alto & Baritone Saxophones

page 1 of 2



1. Quarter note = 72 (minimum) for all scales

2. All Scales shall be performed ascending - tongued; descending - slurred.

Chromatic & Major Scales

Alto & Baritone Saxophones

Ab Major (Concert B)

Musical notation for the Ab Major scale (Concert B) in treble clef. The scale is written in 4/4 time and consists of 12 notes: Ab, Bb, C, Db, Eb, F, G, Ab, Bb, C, Db, Eb. The ascending scale is marked with a slur, and the descending scale is marked with a slur.

Db Major (Concert E)

Musical notation for the Db Major scale (Concert E) in treble clef. The scale is written in 4/4 time and consists of 12 notes: Db, Eb, F, G, Ab, Bb, C, Db, Eb, F, G, Ab. The ascending scale is marked with a slur, and the descending scale is marked with a slur.

Gb Major (Concert A)

Musical notation for the Gb Major scale (Concert A) in treble clef. The scale is written in 4/4 time and consists of 12 notes: Gb, Ab, Bb, C, Db, Eb, F, Gb, Ab, Bb, C, Db. The ascending scale is marked with a slur, and the descending scale is marked with a slur.

B Major (Concert D)

Musical notation for the B Major scale (Concert D) in treble clef. The scale is written in 4/4 time and consists of 12 notes: B, C, D, E, F#, G, A, B, C, D, E, F#. The ascending scale is marked with a slur, and the descending scale is marked with a slur.

E Major (Concert G)

Musical notation for the E Major scale (Concert G) in treble clef. The scale is written in 4/4 time and consists of 12 notes: E, F#, G, A, B, C#, D, E, F#, G, A, B. The ascending scale is marked with a slur, and the descending scale is marked with a slur.

Chromatic Scale

Musical notation for the Chromatic Scale in treble clef. The scale is written in 4/4 time and consists of 24 notes: C, C#, D, D#, E, E#, F, F#, G, G#, A, A#, B, B#, C. The ascending scale is marked with a slur, and the descending scale is marked with a slur.

Musical notation for the Chromatic Scale in treble clef, continuing from the previous block. The scale is written in 4/4 time and consists of 24 notes: B, Bb, Ab, G, F, E, D, C, B, Bb, Ab, G, F, E, D, C, B, Bb, Ab, G, F, E, D, C, B. The ascending scale is marked with a slur, and the descending scale is marked with a slur.

1. Quarter note = 72 (minimum) for all scales

2. All Scales shall be performed ascending - tongued; descending - slurred.