

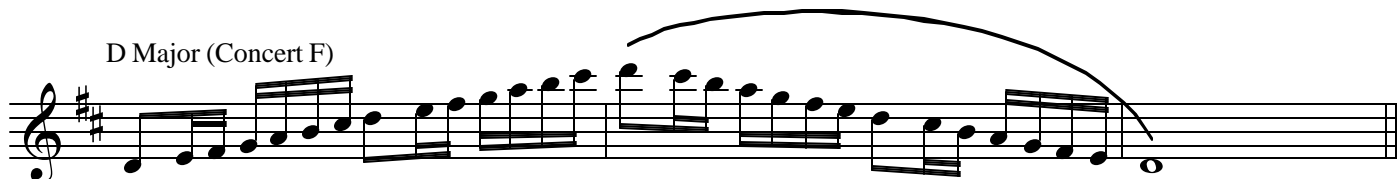
Chromatic & Major Scales

E♭ Low Clarinets

A Major (Concert C)



D Major (Concert F)



G Major (Concert B♭)



C Major (Concert E♭)



F Major (Concert A♭)



B♭ Major (Concert D♭)



E♭ Major (Concert G♭)



Chromatic & Major Scales

E♭ Low Clarinets

Ab Major (Concert B)

Musical notation for the Ab Major scale (Concert B) for E♭ Low Clarinet. The scale is written in treble clef with a key signature of three flats (B♭, E♭, A♭). It consists of an ascending and a descending line of eighth notes, each spanning two octaves and ending with a fermata.

Db Major (E Concert)

Musical notation for the Db Major scale (E Concert) for E♭ Low Clarinet. The scale is written in treble clef with a key signature of four flats (B♭, E♭, A♭, D♭). It consists of an ascending and a descending line of eighth notes, each spanning two octaves and ending with a fermata.

Gb Major (Concert A)

Musical notation for the Gb Major scale (Concert A) for E♭ Low Clarinet. The scale is written in treble clef with a key signature of five flats (B♭, E♭, A♭, D♭, G♭). It consists of an ascending and a descending line of eighth notes, each spanning two octaves and ending with a fermata.

B Major (Concert D)

Musical notation for the B Major scale (Concert D) for E♭ Low Clarinet. The scale is written in treble clef with a key signature of two sharps (F♯, C♯). It consists of an ascending and a descending line of eighth notes, each spanning two octaves and ending with a fermata.

E Major (Concert G)

Musical notation for the E Major scale (Concert G) for E♭ Low Clarinet. The scale is written in treble clef with a key signature of three sharps (F♯, C♯, G♯). It consists of an ascending and a descending line of eighth notes, each spanning two octaves and ending with a fermata.

Chromatic Scale

Musical notation for the chromatic scale for E♭ Low Clarinet. It is written in treble clef with a 2/4 time signature. The scale consists of three lines of eighth notes: the first line is ascending from C4 to C5, the second line is descending from C5 to C4, and the third line is ascending from C4 to C5. Each line is marked with a slur and a fermata at the end.

1. Quarter note = 72 (minimum) for all scales

2. All Scales shall be performed ascending - tongued; descending - slurred.